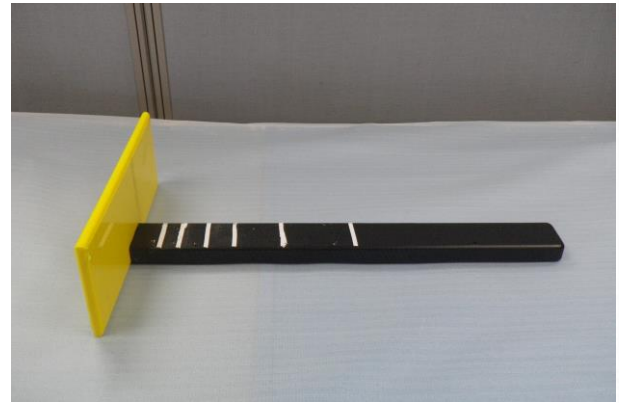


Name \_\_\_\_\_

## T Bar Sundial - Student Worksheet

Solar hours are estimated by dividing daylight by twelve.

Paintings of T bar sundials were found on tomb walls in the pyramids. They were made of wood, would have been inexpensive to make and light enough to carry about.



Draw your T bar solar measuring stick below to half scale when you have finished working with it.

What is a solar hour? \_\_\_\_\_

What does your sundial measure? \_\_\_\_\_

\_\_\_\_\_

Name \_\_\_\_\_

## T Bar Sundial - Student Worksheet

What are the advantages of this over the stone or clay nodal sundial?

---

What is the smallest fraction of one hour that you can measure accurately using this?

---

---

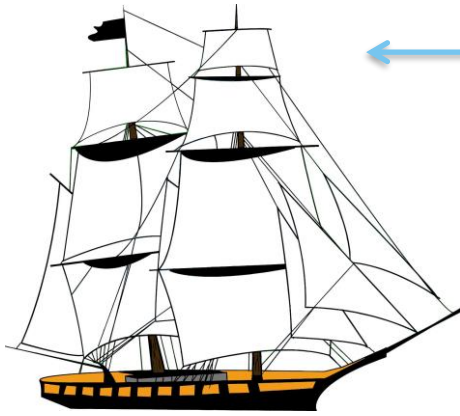
### Extra for experts

On sailing ships fresh water was kept in wooden casks and often drinking it could be a health hazard. In Royal Navy ships captains had casks of rum for drinking. The officers drank tot's neat and the sailors had watered rum. The addition of alcohol made the water safer to drink.

Using what we have just learned, why would sea captains wait until the sun was over the topmost yardarm to break out the rum ration and let the sailors stand easy on deck?

Name \_\_\_\_\_

## T Bar Sundial - Student Worksheet



Topmost  
yardarm

Yardarms are  
horizontal spars  
from which sails  
are set

---

---

---